



SPREP

Secretariat of the Pacific Regional
Environment Programme

PO Box 240, Apia, Samoa

E: sprep@sprep.org

T: +685 21929

F: +685 20231

W: www.sprep.org

The Pacific environment, sustaining our livelihoods and natural heritage in harmony with our cultures.



Final Quarter 2015 Report to USAID

Project: Pacific adaptation to climate change

Project Number: AID - ASIA - IO - 11 - 00002

Included in this report:

1. Report on component A: Solomon Islands Ecosystem based Adaptation

Attachment 01 – CHICCHAP Provincial Steering Committee Meeting

Attachment 02 – LLCTC General Conference Participants List.

Attachment 03 - EbA Management Plan for Choiseul Bay

Attachment 04 - EbA Management Plan for Sasamuga

Attachment 05 – Ecological Assessment Reports

Attachment 06 - Executive paper approval minutes

Attachment 07 –PEBACC Inception workshop presentation

USAID funding report on activities

1st October, 2015 to 31 December, 2015

A. Ecosystem-based Adaptation (EbA) in Solomon Islands

Completed activities and outcomes:

1. Ongoing CHICCHAP program coordination through PAIG mechanism
2. SPREP participate at the Luru Land Conference of Tribal Community (LLCTC) Annual General Meeting
3. Taro EbA demonstrations sites coastal rehabilitation undertaken.
4. The nursery at Choiseul bay transferred to Taro Island for Rehabilitation
5. Sasamunga nursery transfers ongoing.
6. Review of Choiseul Province Medium Term Development Strategy
7. Invasive species education products produced
8. EbA presentation delivered at PEBACC Inception
9. Media stories released to raise awareness of USAID/SPREP project

REPORT AGAINST SOLOMON ISLANDS LOG FRAME IMPLEMENTATION:

Activity 2.1 - Coordination of Project Delivery

Partner coordination

The final PAIG meeting for 2015 was held in Honiara September with a number of recommendations including the need for stronger ownership of CHICCHAP by partners and strengthening coordination at the provincial level. This was followed by the CHICCHAP provincial steering committee meeting on the 9 November 2015.

Many of the discussions of the CHICCHAP provincial steering committee focuses on the shared work plans to strengthen coordination at provincial level. There is also further request for coastal tree planting on Taro to include fruit trees along the central part of the Taro Island.

(SEE ATTACHMENT 01 – CHICCHAP Provincial Steering Committee Meeting minutes)



Photo: CHICCHAP Provincial Steering Committee, November 9 2015

To assist at project sites in Choiseul on an on-going basis, SPREP and the NGO Luru Land Conference of Tribal Community (LLCTC) have formalised their mutual interests and signed a Memorandum of Understanding (MOU).

LLCTC is an indigenous organization representing the people of Luru (Choiseul province). Its mission is to unite chiefs, churches and citizens towards a common goal of an enduring, represented and respected Luru land, people and their culture. The SPREP-USAID EbA project also supports LLCTC General Conference since 2013 and held every two years. The conference attracted more than 200 participants throughout Choiseul and SPREP took the opportunity to present its EbA activities.



Fig1 .Photo: LLCTC Assistant Environment Officer – supporting LLCTC and SPREP EbA activities on Choiseul

As part of the collaboration the USAID/SPREP project provided funding for LLCTC to hire a locally-based Assistant Environment Officer. This position aims to build capacity and strengthen coordination with LLCTC and Choiseul Provincial Government. The position that is now filled and functioning to provide support to USAID/SPREP project sites and other environmental initiatives in Choiseul.

(SEE ATTACHMENT 02 – LLCTC General Conference Participants List)

Completion of Activity 2.1 - 99% - Governance support to established coordination structures is ongoing.

Activity 2.2 - Climate Change Vulnerability Assessment

Vulnerability assessment activity has been completed. Please see previous reporting to USAID for further details. This document is available online at: <http://www.sprep.org/publications/ecosystem-based-adaptation-and-climate-change-vulnerability-for-choiseul-province-solomon-islands-synthesis-report>



Completion of Activity 2.2 - 100%.

Activity 2.3 - EbA Planning and Mainstreaming

The USAID/SPREP Ecosystem Ecologist Consultancy is supporting Provincial Government and land owners to create EbA Management Plans for Taro/Choiseul Bay and Sasamuga. The EbA management plans for Choiseul Bay and Taro have been completed and finalised. They are now waiting formal adoptions by the Choiseul Provincial Government Executive.

A review of the Choiseul Province Medium-Term Development Strategy is ongoing with inputs from other CHICCHAP partners on strengthening the resilience of the people of Choiseul from the impacts of climate change. The EbA approach has been included as a cost-effective and natural solution that communities can adopted by protecting and managing their forest, coastal and marine ecosystems.

Sasamuga and Choiseul Bay (Taro)

New management plans developed by the USAID/SPREP project identify a number of priority climate change-related issues and proposes EbA activities that can be incorporated into an integrated approach to adaptation for the 1) Taro and Choiseul Bay area and 2) Sasamunga, on the southern side of Choiseul Province. These plans provide:

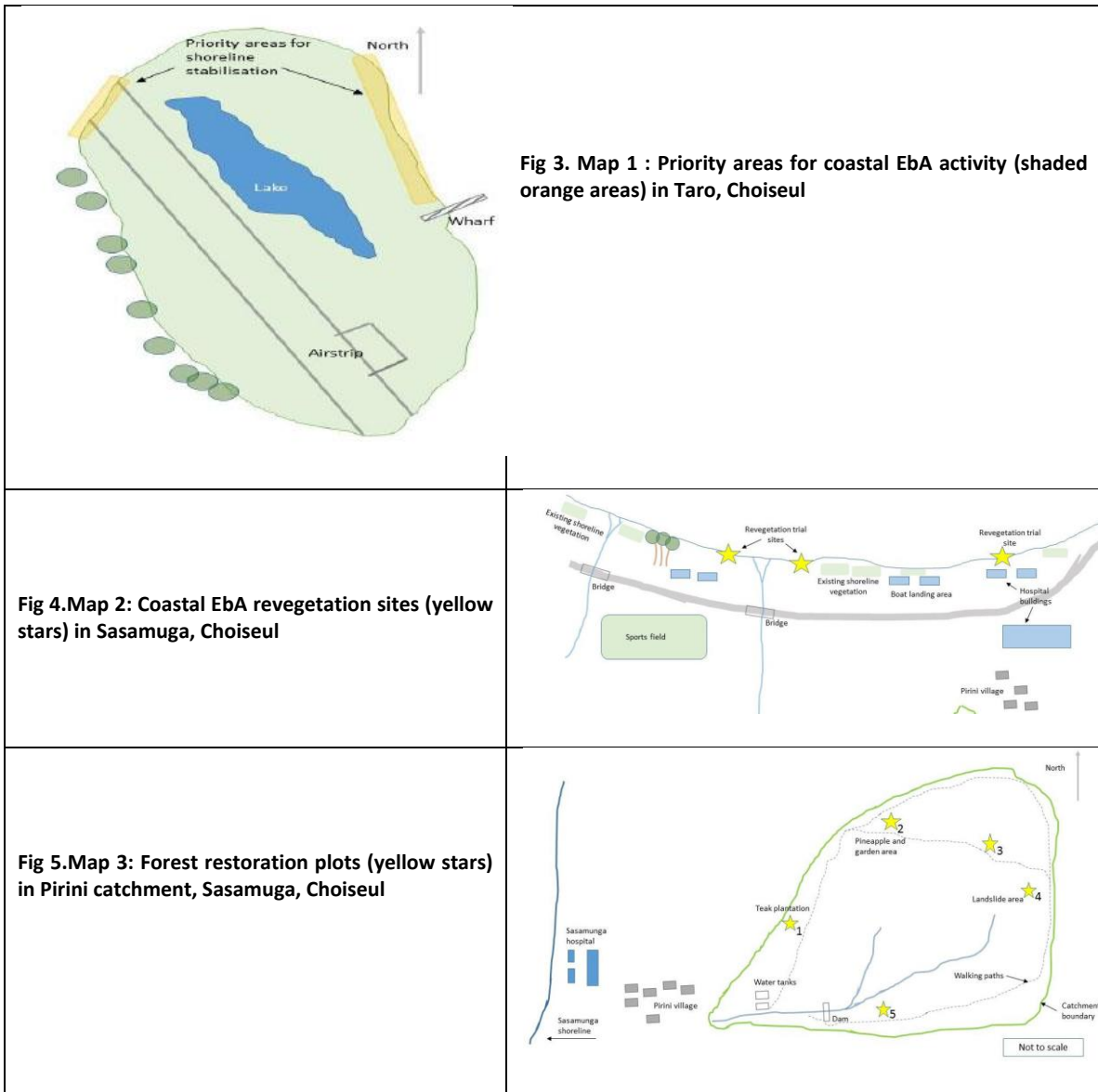
- Background to these specific locations and the expected impacts of climate change on the local environment and communities. Priority issues associated with climate change are identified.
- Summary of each priority issue, the associated ecosystem services that could be impacted, and the proposed EbA activities.
- Implementation plan for the proposed activities over the coming 2 years including the likely organisations involved and an indication of the resources required.



Fig2. Photo: Existing natural mangrove regeneration near Taro airstrip.

The proposed EbA activities use two main strategies. Firstly, improving the health of existing ecosystems that provide key ecosystem services, such as protection from storm surge. This is primarily done via the management or removal of activities that degrade those ecosystems. The second approach is to restore biodiversity into key areas to support ecosystem services that are not currently provided.

The following priority areas designate where revegetation activities are currently taking place under the USAID/SPREP project at Choiseul Bay (Taro) and Sasamuga:



(SEE ATTACHMENT 04- EbA Management Plan for Choiseul Bay- Previous report)
 (SEE ATTACHMENT 05 - EbA Management Plan for Sasamuga- Previous report)

Mount Maetambe and Kolombangara River Catchment

The USAID/SPREP project has initiated Mt Maetambe landowners’ consultations in collaboration with LLCTC and Ecological Solutions (both CHICCHAP members) and provided support for the completed baseline biodiversity assessment (see previous reporting for details).



Fig6.Photo: Biodiversity baseline findings summary

Ongoing landowners’ consultation is required to designate the Mt Maetambe and Kolombangara river catchment as managed areas. Due to the sensitive legal nature of landowner identification, this process will require more time beyond the USAID/SPREP project.

SPREP is collaborating with Ecological Solutions of Solomon Islands (ESSI) to formulate a Management Plan for the site with support through the CEPF funds. Fortunately ongoing work by SPREP and other CHICCHAP partners in Choiseul can ensure these consultations continue with other funding sources (such as PEBACC, the Pacific Ecosystem-based Adaptation to Climate Change project which is implemented by SPREP and funded to 2019).

SPREP-PEBACC project and ESSI have mutually agreed to continue with the work and the first consultation meetings to map the area is schedule for the end of January 2016.

Completion of Activity 2.3 - 98% - Management plans now complete, ongoing support to communities to implement management plans will be provided until 31 Dec 2015.

Activity 2.4 - EbA Implementation

USAID/SPREP implementation is currently underway at the following sites in Choiseul: 1) Taro Island, 2) Choiseul Bay, 3) Pirini catchment in Sasamuga village, 4) Mount Maetambe and Kolombangara River and 5) Rob Roy Islands.

An executive paper was prepared by the SPREP officer and presented to the Choiseul provincial executive for approval of all EbA implementation on Taro Island Township. All the recommendations of the executive paper have been formally endorsed by the Choiseul provincial executive.

SITE 1 and 2 - Choiseul Bay integrated coastal enhancement, water catchment protection and ecosystem rehabilitation site

More than 35 standard 6 students of Taro Primary School participate in the SPREP-USAID Ecosystem-based Adaptation (EbA) Project to plant over 120 Trees on Taro Island.

Speaking during the event; the deputy Provincial Secretary, Mr. Geoffrey Pakipota encouraged all students to take ownership of the plants and expressed the commitment of the province to ecosystem-based adaptation activities undertaken by SPREP and other partners.



Fig 7-8.Photo: Students participating in coastal rehabilitation on Taro Island.

Technical support is being provided through USAID/SPREP 2 consultancies (Ecosystem Ecologist and Forest Regeneration Specialist) and the following activities have now been completed at Choiseul Bay by USAID/SPREP:

- Implemented ecological assessment of Taro Island and identified sites highly threatened by coastal erosion.
- Nursery for coastal plants completed and transferred to Taro Island for transplanting.



Fig 9.Photo: Students planting trees – Taro Island

As part of the ongoing ecosystem resilience waste management has been at the centre of strengthening ecosystem health for Taro Township. The SPREP-USAID project partnered with the Ministry of Environment and the Choiseul provincial government for waste management. As part of the initiative the Ministry of Environment provided waste bins for the township and SPREP supporting installations of the bins. This activity was completed in November 2015 with 50 bines on bin stand installed within the township.



Fig 10.Photo: New binstands installed for Taro, Choiseul

SEE ATTACHED 06: Ecological Assessment Reports.
E ATTACHMENT 07 – Executive paper minutes)

SITE 03 - Sasamuga EbA integrated water catchment rehabilitation and management

Through the support of USAID/SPREP, Sasamuga village in Choiseul Province of the Solomon Islands is becoming a notable example of ridge to reef management in the Pacific. Activities are underway across 4 key integrated areas:

RIDGE	Rehabilitate and protect the water supply through replanting and community-led catchment management
COMMUNITY	Installation of water tanks to increase on-site water storage from the existing weir to supply community and hospital
COASTLINE	Shoreline stabilisation which includes revegetation as a means of reducing the impacts of erosion and storm surge
REEF	Awareness is being raised regarding a potential locally managed marine

The following activities have now been completed at Sasamuga by USAID/SPREP:

- Nursery established to provide seedlings for replanting.
- Ecological assessment completed.
- Water tanks purchased and installed.
- Community water management committee established.



Fig11.Photo: New USAID/SPREP water tanks in Sasamuga, Choiseul

The following activities are to be completed at Sasamuga by USAID/SPREP prior to 31 Dec 2015:

- Completion of reforestation and ecological enhancement in catchment
- Completion of coastal tree planting.
- Designation of marine site and terrestrial sites as protected.

Completion of Activity 2.4 - 95% - Remaining activities to be carried out by the SPREP PEBACC project

Activity 2.5 - Training in EbA

Environmental legal education for Choiseul Communities

USAID/SPREP has developed a range synthesis material from information provided by the Landowners' Advocacy and Legal Support Unit (LALSU) of the Solomon Islands Government

Public Solicitor's Office to support environmental legal education in Choiseul Province. There are 6 publications in total:

- The Timber Rights Acquisition Process for Landowners
- Mining Process for Landowners
- Environmental Impact Assessment for Landowners
- Creating A Community Based Organisation and Organising Your Community For Conservation
- How to protect special places on your land and sea under the Protected Areas Act 2010
- The Logging Code of Practice

The will be finalised under the PEBACC project.



Fig 12.Photo: Draft copies of the material produced

Completion of Activity - 97% - Legal education materials to be published for training in protected area planning and resource management once Government approval is issued.

Activity 2.6 - Communications and Knowledge Management

Solomon Islands Rangers Association Workshop and SPREP PEBACC Inception

The SPREP USAID project has been invited present on current activities to stakeholders at the national level on its activities in Choiseul. This includes the national rangers' association workshop in which more than 50 rangers working in marine and terrestrial protected areas participated.

The SPREP-USAID project activities were presented at the new SPREP PEBACC project inception workshop in Suva, Fiji. The processes involved in implementing EbA in Choiseul were highlighted noting that when the SPREP-USAID project ends in December 2015, some the activities will continue under the new project.

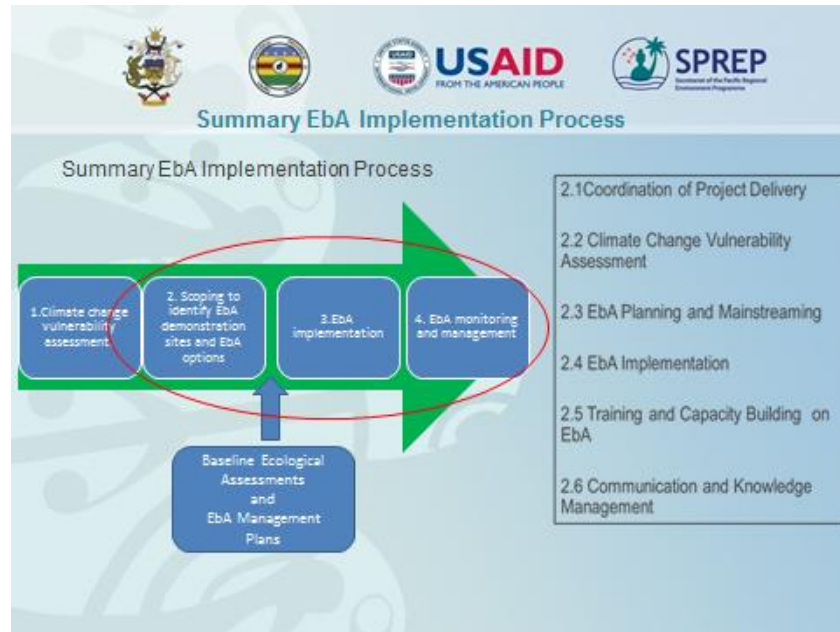


Fig 13. Image: Summary of EbA Implementation Process, PEBACC inception workshop, 2015

(SEE ATTACHMENT 11 - Full Presentation)

Media Releases

News and information from USAID/SPREP activities in Choiseul have been distributed via media release, the SPREP website and in the SPREP newsletter. Two recent releases include:



Fig 14 .Image: National Newspaper Solomon Star captures news of coastal rehabilitation and tree planting for Taro Island, Choiseul Bay.



<https://www.sprep.org/biodiversity-ecosystems-management/taro-primary-school-students-participate-in-tree-planting-to-strengthen-the-resilience-of-taro-island-from-the-continued-impacts-of-climate-change>

Fig 15. Photo: Taro Primary School students participate in tree planting to strengthen the resilience of Taro Island from the continued impacts of Climate change.

Knowledge Management

Materials generated by the USAID/SPREP project are being made publically available at <http://www.sprep.org/usaid> to ensure long term accessibility and sharing. The SPREP Information Resource Centre is also providing archival services to ensure all project reporting, materials and key publications are stored in perpetuity.

Completion of Activity 2.6 - 96% - Communication of milestone projects events for national and regional audience will continue into the next reporting period as they occur.

End of Project December 2015

- All project activities have been completed by December 2015
- All financial procurements and finances process for Choiseul have ceased as of September 2015